



**GLOCAL
SCHOOL**
SHAPING YOUNG MINDS

(CBSE Affiliated Co-Educational Cum Boarding School)



ACHIEVING
GLOBAL STANDARDS
WITH
LOCAL INNOVATION



Glocal at a Glance

The Glocal School is CBSE affiliated co-educational school, spread across nearly 50 acres in the quiet surroundings of the foothills of Shivaliks offering a perfect blend of State-of-the-art infrastructure and beautiful natural surroundings, making the environment positive and lively.

Our name is inspired by the ability to "Think Globally and Act Locally" that's why with a staunch belief that everyone has tremendous potential, our objective is to polish Indian talent and put it on a global platform with an International outlook. Our philosophy is to help students harness their strengths and evolve into individuals with a deep-rooted code of ethics.

"Unity in Diversity" can be experienced through acts and lived by being a part of Glocal. All it requires is to make a right choice at the right time for the bright future.



School is the path not point



Dr. Gunjan Rajput (Principal)

Ph.D (School Education), Jamia Millia Islamia
M.Ed, B.Ed , M.Com, B.Com (Hons.), Delhi University,
UGC – JRF (Education)

Associated with Glocal since 2013 as founding faculty
of Glocal School of Education and The Glocal School.

From Principal's Desk

It is a privilege to be the Principal of Glocal School and lead such a dedicated and committed team of teachers and learners.

We are passionate about teaching, learning and inspiring our students to believe in themselves and be proud of who they are and their achievements.

Glocal School is an amalgamation of competent teachers, modern and secure infrastructure, an idyllic setting with facilities for the teachers and students for staying in the campus and experienced administration. Huge campus, pollution free environment, CBSE curriculum, excellent pastoral care and mess facility run by professionals are some of our strengths.

We at Glocal believes in upholding traditional values while adopting contemporary infrastructure and pedagogies. Children having diverse backgrounds, unique streaks of values, traditions and cultures enter the portals of a learning community. At Glocal, unrelenting effort goes in mentoring and metamorphosing the uncut diamonds into finer Glocal Gems.

We aim to provide quality education in the ideal environment and to create a next-generation leader with high ideals and humanity. Our first priority is academic success. Our Glocal staff commits to provide the highest quality education possible. The school is involved in many sporting and cultural activities that enable our girls and boys to develop their personality, temperament and character in different ways – socially, spiritually, academically, physically and morally.

As a school, we always welcome parental and community involvement in our school and we derive great personal and professional fulfillment from the role we play in the lives of the young generation whose education is entrusted to us.

We are proud of our record of academic, sporting and cultural successes but will always continue to improve.

I hope that this prospectus gives you a flavour and snapshot of our school and the joy and enthusiasm within which we work daily.



Vision & Mission

An investment
in knowledge
pays the best
interest

VISION

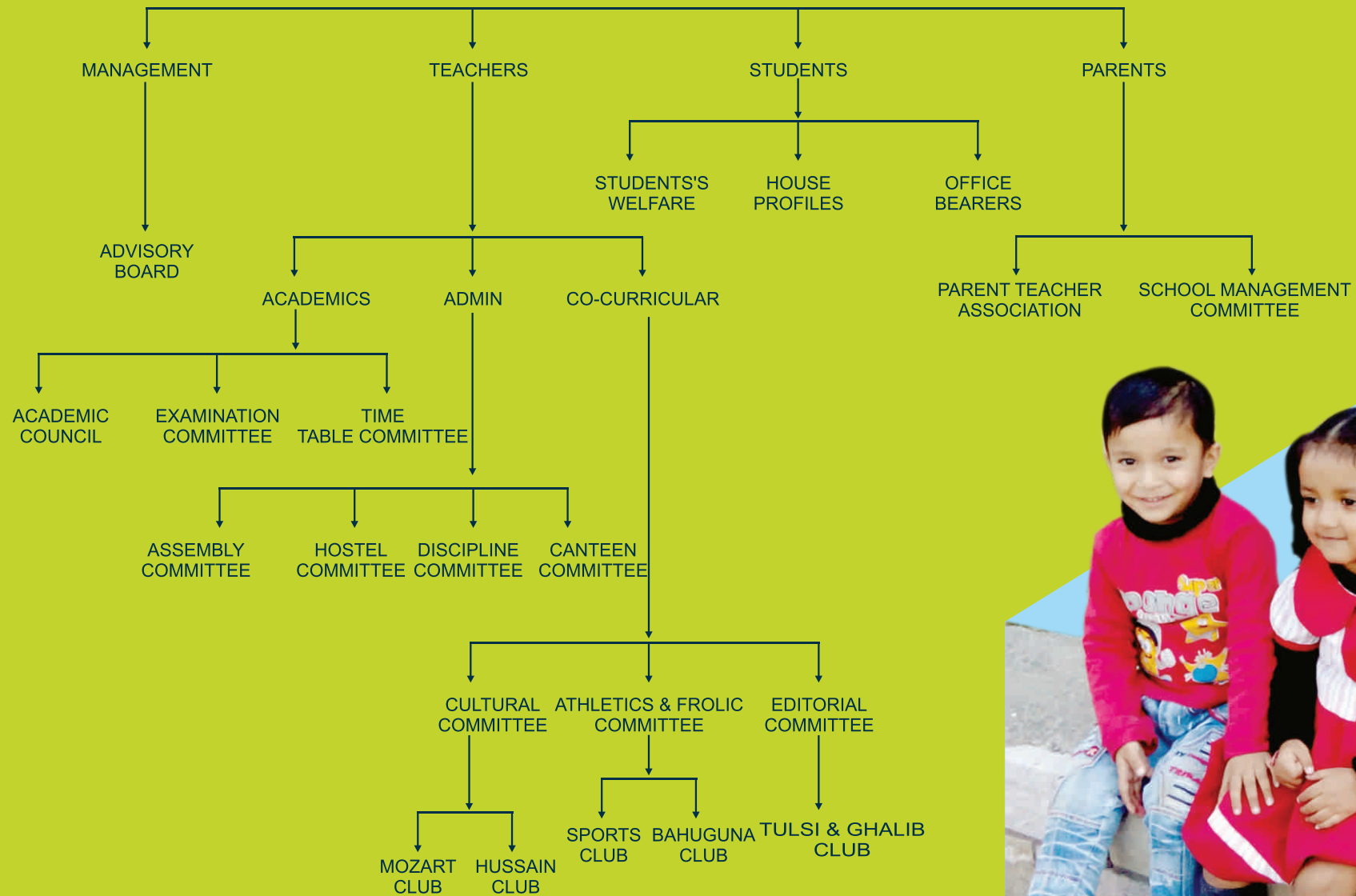
Glocal school is committed to nurturing intellectual curiosity, collaborative & critical thinking of its students, which will enable them to lead with integrity and compassion to become productive members of the community.

MISSION

Glocal School aims to provide a holistic development of each student that promotes self discipline, motivation and integrates learning with fun. It strives to celebrate diversity of culture and heritage and equip the students to meet the challenges of tomorrow effectively.



Glocal Family





Infrastructure

- ✦ Well-equipped labs for all departments.
- ✦ Well-fortified Multi-Purpose Hall.
- ✦ Hygienic and sanitized Canteen.
- ✦ Well organized and updated library.
- ✦ Stationery Shop with ample amount of stock.



Academics and Methodology

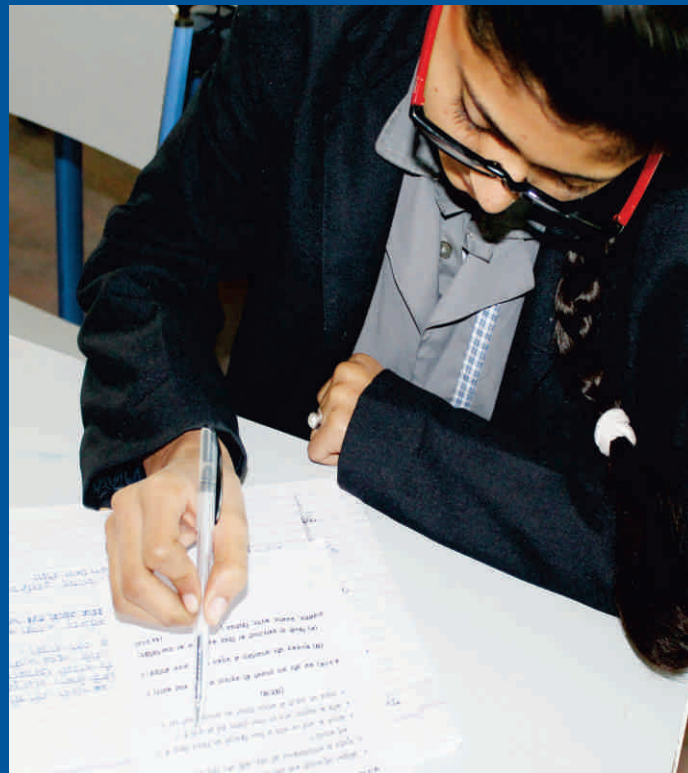
- ✦ The school academic year commences from April and ends in March and is divided into two sessions including Formative and Summative Assessments as per the CCE pattern.
- ✦ It runs from Play-Group to XII and follows the curriculum laid down by the CBSE, New Delhi.
- ✦ It focuses on developing the communication skills.
- ✦ Its methodology is purely scientific i.e. based on facts and have real world approach.
- ✦ Various discussions are held in the classes through which children become sensitive and responsible towards their role in society.



Intelligence
plus
character
that is the
goal for true
education

Fun and Smart Learning

- ✦ Our Methodology helps students make connections to real life application through digitally equipped smart classrooms.
- ✦ Students develop the habit of frequent discussions, presentations and write about possible hypothesis, predictions, analysis, findings & ideas.
- ✦ Students actively explore essential questions and make frequent connections between and among eras, people & events from the past and present.





Glocal Teaching Staff

- ✦ Highly Qualified and well experienced teaching staff from different places ready to explore in different fields.
- ✦ Here teachers provide enthusiastic, warm and caring environment by being always approachable.
- ✦ Glocal teachers constantly renew themselves as professionals with the highest quality of education possible.
- ✦ Teachers in Glocal find new ways to present demonstration and ensure that every student understands the key concept.

“A good teacher is a doctor who heals ignorance the artist who inspires creativity”

Teacher's Views



Student's creativity in Glocal is explored through hobbies club in which he/she can unleash his/her originality.

- Ms. Uzma Naeem
(Art & Craft Teacher)



Every student in Glocal is encouraged to take an active part in Games & Sports for all round development

Mr. Updesh Rana
(PTI)



We use techniques to develop and bring with it the latest opportunities and challenges for students. We prepare students to be real, responsible and dynamic.

Ms. Zarmeena Ansari
(HM Primary Wing)



Computer proficiency has become a key to attain success in all areas of the real world. Here we work and prepare students for the challenging future where computers have become as common as pencil and paper.

-Ms. Shivangi Sharma Rawat
(Computer Teacher)



We nurture our students' power of reasoning, creativity, spatial thinking, problem solving ability through multiple approaches.

-Ms Nazia Rao
(Maths Teacher)



We provide professional environment that is less driven by lectures and more oriented around opportunity to apply learning through demonstrations, modelling and practice.

- Ms. Aisha Parveen
(Physics Teacher)



We teach students that moral science is not a subject but is a life put to the test in dozen of moments. Our purpose is not to make a living but a life.

Ms. Aaisha Naaz
(TGT Science)



We don't take SST merely as a subject but through this Glocal School students are made to learn their own identity, history, culture and relate to other humans which is essential to living as one.

Mr. Ratan Singh
(PGT ENGLISH/SST)



We in Glocal School take commerce as a base to satisfy increasing human wants and thereby helps students to increase their standard of living to become the productive member of society.

Mr. Deepak Taneja
(PGT Commerce)

Testimonials

Unity and eco friendly environment is the strength of Glocal School.

(Aashna Mirza, XI-Commerce)

The best thing in our school is bonding between teachers and students.

(Yusra, XI-Science)

Achievements are compulsory in Glocal School.

(Ali Bakshi, IX)

Glocal teaches us to live, breathe and grow with honesty.

(Naish Ali, IX)



Children have scientific instincts and we are here to cater their needs and curiosity to develop range of scientific skills through modern technology.

Ms. Nasreen Begum
(PGT CHEMISTRY)



Co-Curricular

- ✦ A healthy mind in a healthy body is the key to all round development.
- ✦ Beyond the learning in classes and labs, Glocal has developed a mechanism to introduce each student to sports and wide range of co-curricular activities.

Cultural

Cultural environment provides a balance between studies and co-curricular activities which nurture the hidden talent of every student.

- ✦ Our cultural programme at Glocal is integral to our school, an essential part of a holistic education immersing children in activities that strongly develops creativity and confidence.
- ✦ Within our philosophical educational beliefs that children must be exposed to many different facets of life, we have various activities and competitions.



Glocal Cricket Academy
inaugurated
by a cricket
legend
Shri. Kapil Dev
on 23rd Nov 2015



Sports

Monotony of lectures have been minimized by outdoor work and active participation in it, generate healthy competitive spirit and interest in life.

- ✦ Sports and games are an integral part of a student's life. Glocal has provision for all types of games within the boundaries of campus through huge playground for various sports.
- ✦ A special cricket academy has been erected to transform the dreams of students into reality.
- ✦ Regular participation in games is prerequisite in Glocal for building up a healthy body and energetic mind.





Pastoral Care

- ✦ We build up the relationship between academic achievement and resilience in dealing with personal issues.
- ✦ **One to one mentoring** of students helps them to have the positive energy and motivates them to do well in their studies.
- ✦ We ensure that students inculcate the habit of cleanliness and proper hygiene.
- ✦ **Multi Speciality Hospital** within the campus providing 24x7 ambulance service serves to be the savior in emergency cases.
- ✦ Hygienic and well organized **meal facility** provided by a team of professionals helps students to remain physically and mentally fit.





Hostel Facility

- ✦ Well lit airy rooms.
- ✦ Strict yet motherly and affectionate warden.
- ✦ Separate beds, cupboards and study tables.
- ✦ Laundry facility.
- ✦ A good dinning facility.
- ✦ Well organized transport facility.



Girl's Education

Glocal believes that girl's education is must for the overall development of society. To achieve this, Glocal provides:

- ✦ Special concessions for girls.
- ✦ Scholarship for meritorious girls.
- ✦ Separate buses for girls on all routes.
- ✦ Special Counseling & Mentoring sessions for senior girls.



Glocal with a Difference



Parents Dealing



Guest Lectures



Excursion



Personality Development Programme



Seminars



Residences and Leisure Facilities for Faculty

Glocal with a Difference



Transport Facility



24x7 Ambulance Facility



Multi Speciality Hospital



Dining Facility



Laundry Facility



Separate Wings



Address : Delhi Yamunotri Marg, State Highway 57
Mirzapur Pole, Distt. - Saharanpur, UP- 247121, India

Website: www.glocalschool.in
E-Mail: info@glocalschool.in

Contact Us:
+91- 9917586795